

## Outdoor motion detectors - RC-plus next N

### RC-plus next N 130



white mat, similar to RAL9010 , Part No. 93321      black mat, similar to RAL9005 , Part No. 93323      brown mat, similar to RAL8014 , Part No. 93324

### Product Information

- Motion detector with 130° detection area and anti-creep zone
- Mechanical range adjustment
- Different follow-up time depending on direction of movement
- Uninterrupted parallel circuit detection of several detectors
- Manual switching via push-button possible
- Adjustable ball head
- Immediate operation using factory settings
- Additional functions can be set up using the optional remote control.
- Socket compatible to RC-plus (next) and Vario
- Faulty switching due to animals can be avoided by reducing the sensitivity
- Easy mounting thanks to plug base
- Wall, ceiling and corner mounting
- Factory settings 3 min and 20 lux
- **Application examples:**  
outdoor areas (entrances/access roads), parking areas, underground car parks, high-bay warehouse

### Technical Data

**Voltage:** 110 - 240 V AC 50 / 60 Hz (can also be supplied with other operating voltages ON request)

**Dimensions:** 121 x 71 x 85 mm

<b>Power consumption:</b>	approx. 0.5 W
<b>Detection area:</b>	horizontal 130° (Wall mounting)
<b>Range:</b>	max. 20 m across max. 6 m towards max. 4 m anti-creep protection
<b>Monitored area (tangential movement):</b>	450 m <sup>2</sup> / 2.5 m mounting height
<b>Mounting height min./max./recommended:</b>	2 m / 5 m / 2.5 m
<b>Degree / class of protection:</b>	IP54 / Class II
<b>Impact strength:</b>	IK03
<b>Ambient temperature:</b>	-25 °C to +50 °C
<b>Housing:</b>	polycarbonate, UV-resistant

#### **Channel 1 (lighting control)**

<b>Switching power:</b>	3000 W, cos $\varphi$ = 1 1500 VA, cos $\varphi$ = 0.5 300 W LED max. inrush current I <sub>p</sub> (20 ms) = 165 A max. inrush current I <sub>p</sub> (200 $\mu$ s) = 800 A
<b>Type of contact:</b>	1x $\mu$ -contact, NO contact with tungsten pre-make contact
<b>Follow-up time:</b>	15 sec - 16 min, Pulse
<b>Switch-on threshold:</b>	2 - 500 Lux

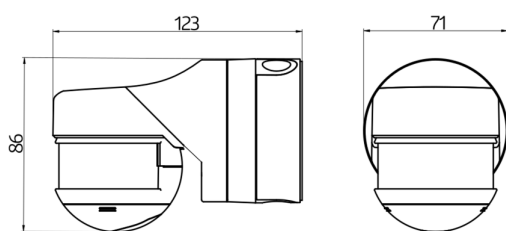
## Description

<b>Description</b>	<b>Colour</b>	<b>Part number</b>	<b>EAN number</b>
RC-plus next N 130	white mat, similar to RAL9010	93321	4007529933211
RC-plus next N 130	black mat, similar to RAL9005	93323	4007529933235
RC-plus next N 130	brown mat, similar to RAL8014	93324	4007529933242

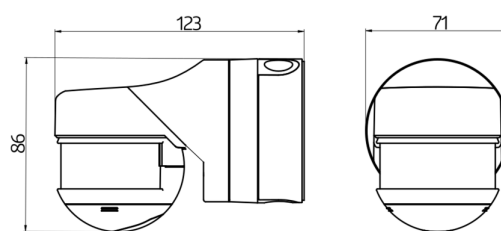
## Accessory

<b>Description</b>	<b>Colour</b>	<b>Part number</b>	<b>EAN number</b>
BLE-IR-Adapter	black	93067	4007529930678
IR-RC	-	92000	4007529920006
IR-RC-LD	-	92649	4007529926497
IR-RC-Mini	-	92090	4007529920907

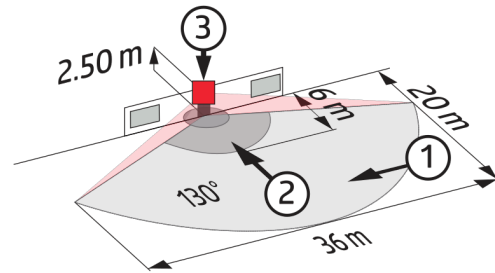
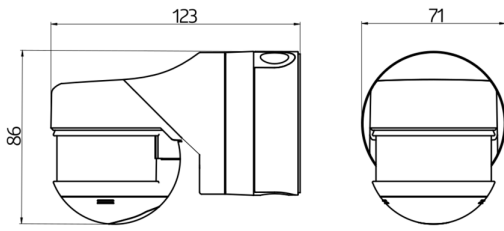
Description	Colour	Part number	EAN number
Wire basket BSK (Ø 164 x 143 mm)	white	92467	4007529924677
RC-Arc extinction kit	white	10880	4007529108800
Mini-RC-Arc extinction kit	black	10882	4007529108824
Outside corner socket RC-plus next	black	97024	4007529970247
Outside corner socket RC-plus next	brown	97014	4007529970148
Outside corner socket RC-plus next	white	97004	4007529970049
Outside corner socket RC-plus next	silver	97043	4007529970438
Inside corner socket RC-plus next	white	97005	4007529970056



Dimensions 93321



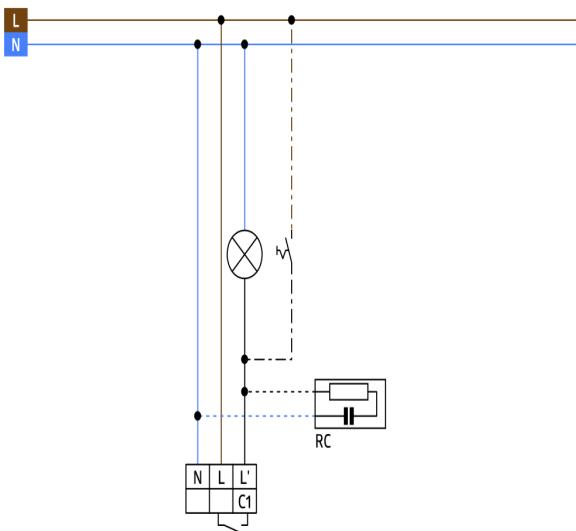
Dimensions 93323



### Dimensions 93324

### Range diagram

- 1: Walking across
- 2: Walking towards
- 3: Anti-creep zone



### Wiring diagrams